

Divisions - All

OXFORDSHIRE HEALTH & WELLBEING BOARD

26 JUNE 2025

OXFORDSHIRE LEARNING DISABILITY PLAN 2025-2025x

Report by Director of Adult Social Care

RECOMMENDATION

The Health and Wellbeing Board is **RECOMMENDED** to

- a) **Note the development of the Oxfordshire Learning Disability Plan 2025 – 2035 for adults.**
- b) **Approve the Oxfordshire Learning Disability Plan 2025 – 2035, acknowledging that following consultation, amendments may be made on the existing draft.**

Executive Summary

1. The Oxfordshire Learning Disability Plan is a strategy for adults, including the transition into adulthood. The Plan is for 10 years and will be reviewed at years 3, 5, and 7 to ensure its effectiveness and adaptability, applying any revisions required based on needs and demands at that time.
2. The Oxfordshire Learning Disability Plan has four key themes:
 - c) Having a life
 - d) Health and wellbeing
 - e) Having a place to live
 - f) Homes not hospitals

There are four cross-cutting areas incorporated within these themes:

- Life changes and transitions
 - Workforce
 - Assistive Technology / Technology Enabled Care
 - Equality, Diversity, and Inclusion (EDI)
3. Each key theme has been developed by a sub-group consisting of experts by experience, professionals, family members and carers, and organisations. The sub-groups and overarching Task and Finish Group were linked into the

Learning Disability Improvement Board to maintain consistency and coherence.

The 'Health and Wellbeing' theme is also linked with the Learning Disability Physical Health Strategy, which is overseen by Oxford Health.

4. Engagement with people was undertaken during October 2024 and November 2024, where views and experiences were gathered from people with a learning disability, family/carers, organisations, and professionals. Information gathered has been incorporated throughout the draft of the Oxfordshire Learning Disability Plan to ensure that the voice of the person is included and heard.
5. The Oxfordshire Learning Disability Plan has been co-designed with people with lived experience, their families, and carers. The dynamic work plans for the Oxfordshire Learning Disability Plan are being co-produced. The Learning Disability Improvement Board will have oversight of the Oxfordshire Learning Disability Plan and will review the progress of the dynamic work plans. Updates on the Plan will be shared during these meetings bi-monthly.
6. The Plan and all the relevant documents used throughout the development of the plan has been in 'easier read' to ensure accessibility and effective engagement with people with lived experience.
7. The consultation of the Oxfordshire Learning Disability Plan commenced on the 2 June 2025 and will be live for six weeks (until 13 July 2025).
8. Following the consultation, the Plan will be finalised and then launched.

Context

9. The Oxfordshire Learning Disability Plan is a 10-year strategy for adults, including the transition into adulthood. The plan will undergo comprehensive reviews to ensure its effectiveness and adaptability at years 3, 5, and 7, applying any revisions required based on needs and demands at that time.
10. The Oxfordshire Learning Disability Plan encompasses topics identified by individuals with learning disabilities as most important to their lives across four key themes:
 - Having a life
 - Health and wellbeing
 - Having a place to live
 - Homes not hospitals

The key themes incorporate four cross-cutting areas:

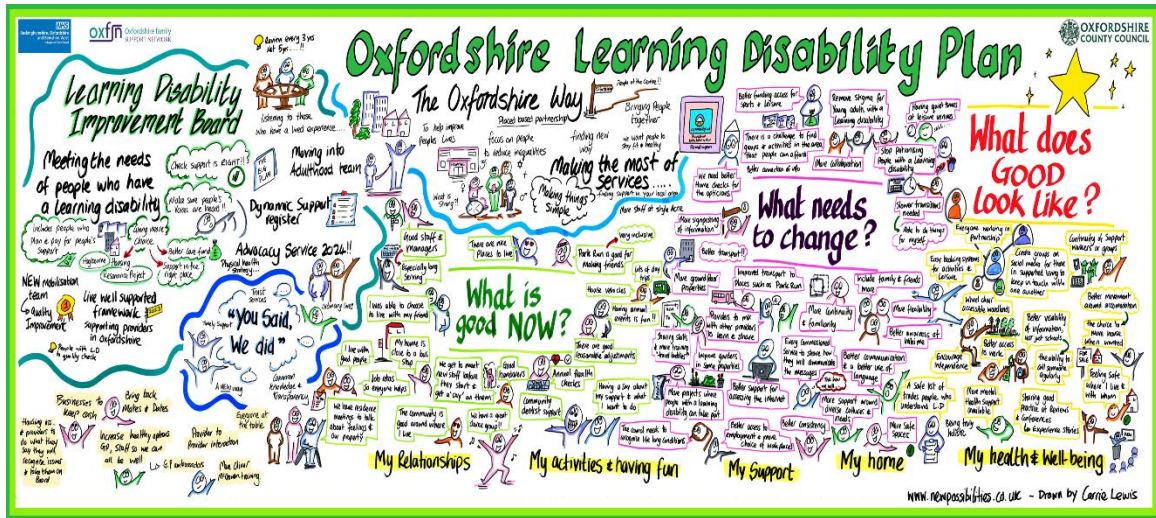
- Life changes and transitions
- Workforce
- Assistive Technology / Technology Enabled Care

- Equality, Diversity, and Inclusion (EDI)
11. Each key theme has a sub-group which is linked with the Learning Disability Improvement Board, with an overarching Task and Finish group overseeing the Plan. The groups consist of experts by experience, organisations, and professionals. The Health and Wellbeing theme will link to the Physical Health Strategy, which is overseen by Oxford Health.
 12. The Oxfordshire Learning Disability Plan has been co-designed with people with lived experience, their families and carers. We are co-producing the dynamic work plans with them as well.

Engagement with people for developing a Learning Disability Plan for Oxfordshire

13. The Oxfordshire Learning Disability Plan has been developed with extensive engagement with people with lived experience as well as their families, carers and voluntary sector organisations supporting them.
14. A variety of methods were used for engagement, including the Sharing Your Story form, open focus groups, and a 'World Café' style engagement event.
 - Sharing Your Story forms were developed to understand what matters to people with a learning disability most in their lives, their stories, experiences of living in Oxfordshire and what good looks like to them. This was shared via Community Support Services, organisations, and service providers to ensure we reach as many people as possible. 24 people completed the forms.
 - The Engagement and Consultation Team visited Community Support Services, where in total 32 people with a learning disability shared what was important to them. Key topics identified to be discussed in more detail at the Open Focus Groups and the Learning Disability Plan World Café Event:
 - My support,
 - My home,
 - My health and wellbeing,
 - My activities and having fun, and
 - My relationships.
 - Oxfordshire Family Support Network (OxFSN) hosted the Learning Disability Plan World Café Event in Didcot on the 26 November 2024. 81 people attended the event; 18 people with a learning disability, 19 people who are family carers, and 31 professionals who work with people with a learning disability, as well as Oxfordshire County Council Adults Social Care and Engagement staff and Oxfordshire Family Support Network (OxFSN) representatives who were facilitating and note-taking during the event. The feedback forms received from the

event showed that people felt the event was 'good' or 'very good,' and they felt they had been heard. The event and conversations were also captured by a Graphic Facilitator who was present throughout the day.



- Adult Social Care Live Well Commissioning Team visited five Community Support Services for Open Focus Groups and met with 49 people with a learning disability and 21 staff who work with them.
 - Four My Life My Choice Self-Advocacy groups, including the young people's self-advocacy group, provided feedback on the draft plan.
15. Our overarching vision for delivering Adult Social Care in Oxfordshire, the Oxfordshire Way, underpinned how we developed the Plan and how asset-based approaches can support people to live independent lives in their homes (where possible) for as long as possible.
 16. Parents of people with a learning disability who are moving into adulthood were present at the Learning Disability Plan World Café event. They shared their experiences, views, and feedback on what is good now, what good looks like, and what they felt needs to change to help achieve what good would look like in the future.
- Draft Oxfordshire Learning Disability Plan 2025 – 2035**
17. The Oxfordshire Learning Disability Plan is structured to be an easier to read document and consists of elements that have been co-designed and co-produced.
 18. The views and experiences shared by people during the engagement phase of the project have been incorporated throughout the Oxfordshire Learning Disability Plan. This, along with the information, experiences, and stories which people have shared to be included within the Plan ensures that people's voices are included and heard.

19. The topics discussed as a result of the varied and comprehensive engagement activities influenced the development and areas of focus for each of the four key themes within the Oxfordshire Learning Disability Strategy ensuring there was a focus of what people felt was good now, what good looks like, and what needs to change.
20. The Oxfordshire Learning Disability Plan is broken down into sections so that it can be easily navigated (see annex 1 Draft Oxfordshire Learning Disability Plan).
 - The first section has information about the strategy, vision, the Oxfordshire Way and learning disabilities.
 - Theme One Having a life: Has a focus on people living a good life with daytime and evening opportunities, work and employment, and advocacy.
 - Theme Two Health and Wellbeing: Has a focus on people being able to live well, maintaining health and wellbeing, health inequalities, and links to the Learning Disability Physical Health Strategy.
 - Theme Three Having a place to live: Has a focus on housing options, support providers, and people knowing their rights and having choices related to this theme.
 - Theme Four Homes not Hospital: Has a focus on support in the community and having systems in place to help avoid admissions to hospital under the Mental Health Act or with discharge planning.
 - The last section looks at the Oxfordshire population and different key areas of data, and a resources section.
21. The four cross-cutting themes are thread throughout the four key themes:
 - Life changes and transitions
 - Workforce
 - Assistive Technology / Technology Enabled Care
 - Equality, Diversity, and Inclusion (EDI)

Consultation Draft Oxfordshire Learning Disability Plan 2025 – 2035

22. The consultation for the draft Oxfordshire Learning Disability Plan commenced on 2 June 2025, on the council's Let's Talk Oxfordshire platform. The consultation is planned to be live for six weeks and will therefore be closed at midnight 13 July 2025. Please see the link to the consultation page on Let's Talk Oxfordshire <https://letstalk.oxfordshire.gov.uk/ld-plan-2025> for details.
23. To ensure we reach as many people with a learning disability as possible, communications have been sent out to groups, support providers, organisations, and other stakeholders to promote the consultation. We also plan to visit local groups and Community Support Services during Learning Disability Awareness Week (16 – 20 June 2025) which will be focusing on the 'Do you see me?' theme which is all about people with a learning disability being seen, heard, and valued and is in line with the Plan's objectives.

24. Following the end of the consultation, feedback will be collated and will inform any changes to be made to the draft Oxfordshire Learning Disability Plan 2025 – 2035.
25. The sub-groups will review the dynamic work plans. This information will then be collated to provide regular updates to the Learning Disability Improvement Board.
26. The Learning Disability Improvement Board will have oversight of the Oxfordshire Learning Disability Plan and will review the progress of the dynamic work plans.

Corporate Policies and Priorities

27. The Oxfordshire Learning Disability Plan will help Oxfordshire County Council achieve priorities of the council's Strategic Plan:
 - Tackling inequalities in Oxfordshire
 - Prioritise the health and wellbeing of residents
 - Support carers and the social care system

Financial Implications

28. There are no direct financial implications associated with this report.

Comments checked by:

Stephen Rowles, Strategic Finance Business Partner,
Stephen.rowles@oxfordshire.gov.uk

Legal Implications

29. Oxfordshire County Council has a general responsibility when exercising its functions under the Care Act 2014 in respect of an individual, to promote that individual's 'well-being', as defined by Section 1 of the Act.
30. In doing so the local authority must have regard to a number of general principles set out in S1(3) of the Act which includes for example, the importance of beginning with the assumption that the individual is best placed to judge his or her well-being. By encouraging engagement in its consultation and the development of its Learning Disability Plan, Oxfordshire County Council is endeavouring to ensure that the recipients of services are able to contribute to decision making in a meaningful way.
31. The Act further requires that the authority meets the assessed eligible needs of those with care and support needs in its area, in the way that best promotes that

individual's well-being and prevents or reduces the need for care and support. It is anticipated that the development of this strategy will ensure that the Council meets those statutory responsibilities an effective, person-centred way.

Comments checked by: Janice White

Head of Law and Legal Business Partner, ASC & Litigation
Janice.White@oxfordshire.gov.uk

Equality & Inclusion Implications

32. An Equality Impact Assessment has been completed for the Oxfordshire Learning Disability Plan 2025 – 2035 and approved by Pippa Corner, Deputy Director Joint Commissioning HESC. Regular reviews will be carried out to ensure that the Plan continues to promote inclusivity and ensures equality is considered in all parts of life for people with a learning disability.

Risk Management

33. Sub-groups established for the different themes in the Oxfordshire Learning Disability Plan representing experts by experience, organisations, service providers and other professionals will continue to be involved in the delivery of the Plan. The groups contribute to identifying and managing any risks associated with the implementation of the Oxfordshire Learning Disability Plan to ensure its successful delivery.
34. The Oxfordshire Learning Disability Plan will be a standing agenda item for the Learning Disability Improvement Board. Risk management will be covered as part of the updates provided to the Learning Disability Improvement Board and escalations will be made as appropriate where needed.

Consultations

35. A Data Protection Impact Assessment was carried out prior to the engagement stage of the Oxfordshire Learning Disability Plan.
36. The council's Engagement and Consultation Team has been actively involved in the development of the Oxfordshire Learning Disability Plan as outlined above. Consultation phase of the Plan has been carefully planned to ensure wider engagement with the public during the consultation period, prior to publication of the final Oxfordshire Learning Disability Plan.

Karen Fuller
Director of Adult Social Care

Annex: Annex 1 - Draft Oxfordshire Learning Disability Plan and Work Plans



Draft Oxfordshire
Learning Disability Pla

Annex 2 – Presentation



Presentation
Oxfordshire Learning

Background papers: Nil.

Contact Officer: Sharon Paterson, Commissioning Manager Live Well
sharon.paterson@oxfordshire.gov.uk

Bhavna Taank, Head of Joint Commissioning LC Live Well
bhavna.taank@oxfordshire.gov.uk

June 2025